

# 3DX-RAY



## ThreatScan®-LSC

- A large and compact panel included
- EOD evaluation
- Customs control
- Vehicle scanning
- Suspect item inspection

Portable, real-time x-ray scanning system

**ThreatScan®-LSC is a lightweight, portable, battery powered dual x-ray scanning system designed in co-operation with first responders and EOD teams to meet the needs of the field operative.**

**Quick and simple to deploy, the system produces high quality real-time x-ray images for rapid and accurate decision making.**

A detector panel is positioned behind the target; the generator is placed in front.

The scan is activated from the imaging station.

The large 600mm x 460mm imaging area of the LS1 panel enables the operator to scan typical bags and packages in a single scan.

The smaller 305mm x 256mm imaging area of the LS3 panel still enables the operator to scan suspect items in a single scan.

The I-Gen can penetrate steel up to 40mm at 120kV and up to 60mm at 150kV.

The LSC system produces sub-millimetre resolution images and there is a range of sophisticated image processing functions available including materials

discrimination, pan, zoom, DeepFocus™, 3D Emboss, measurement and annotation, coupled with high quality images enable the operator to interpret the image quickly and accurately.

The software can also communicate the image on screen to a remote command centre and save images in JPEG and other common file formats.

The standard package comprises a large format panel, compact panel, 120kV or 150kV x-ray generator, tablet pc, ThreatSpect software, batteries, chargers, wireless communication, back pack, cable set and transport cases.

Options include tripod, repeater stations, spare batteries and chargers, soft carry cases, wired and fibre optic cable sets.

**Ideal for use by First Responders, EOD teams, Counter Surveillance, and Customs and Security Operatives**

### The system comprises

- Two resilient detector panels
- A portable and robust x-ray generator (120kV or 150kV)
- A tablet pc imaging station
- Batteries and chargers
- Wireless communication
- Carry cases
- ThreatSpect software
- Back pack
- Compact cable set

### Features

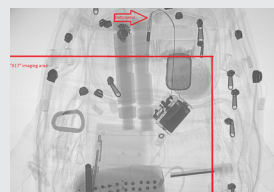
- High penetration with sub-millimetre resolution
- Large and compact detector panels
- Real-time images
- Designed for rapid deployment and ease of use
- Powerful image enhancement and analysis tools
- Intuitive, user-friendly ThreatSpect software
- Scans to 3mm above floor level



Sub range enhancement function



X-ray of drugs in pipes in fuel tank

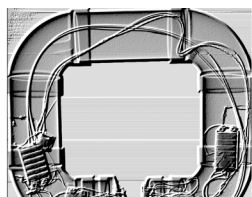


LS1 comparison with 14"x17" detector



Set of IED devices

# ThreatScan®-LSC



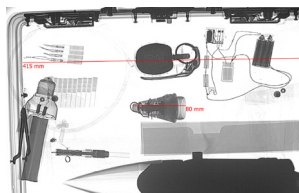
3D Emboss



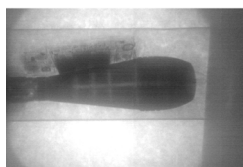
Invert



I-Gen with optional 360° rotating stand



Measurement



Superb penetration - 25cm concrete

## X-Ray Detector Panels (LS1 and LS3)

Image / detector resolution	LS1: 1152 pixels, 40AWG / LS3: 640 pixels, 40AWG (400 micron)
Dynamic range	65536 (16-bit)
Image acquisition / scan speed	LS1: 5 seconds / LS3: 2.7 seconds
Detector dimensions	LS1: 753mm x 478mm x 25mm (external) (L x H x D) LS3: 462mm x 273mm x 35mm (external) (L x H x D)
Imaging / scanning area	LS1: 600mm x 460mm / scans to 3mm above floor level LS3: 305mm x 256mm / scans to 3mm above floor level
Weight	LS1: 5kg (5.5kg with battery) / LS3: 2.7kg (3.2kg with battery)
Power	Self contained rechargeable lithium ion battery (8-hr standby)
Communication protocols	Wireless 802.11 a/b/g/n Wired or fibre optic options, TCP/IP ethernet
Operating temperature	-20°C to +55°C / MIL-STD-810F 501.4 and 502.4
Storage temperature	-40°C to +80°C / MIL-STD-810F 501.4 and 502.4
Humidity	0% to 95% non-condensing

## X-Ray Generator (I-Gen)

	120kV	150kV
Type	120kV (30-120kV) 1mA	150kV (30-150kV) 1mA
Penetration	38mm guaranteed, 40mm typical	55mm guaranteed, 60mm typical
Focal spot size / Beam angle	0.5 x 0.5mm / 40° x 40°	
Pre-warn	0-99 seconds	
Power	Self contained rechargeable cells (2500mAh) Up to 225 images on one charge (2 hour charge) Mains power option	
Weight (without battery)	5.5 kg (6.6kg including battery and handle)	
Size (L x W x H)	245mm x 180mm x 80mm	

## Communications

Wireless (as standard)	802.11g / up to 120m range (extendable with repeaters)
Fibre optic (option)	100m, 150m, 200m
Ethernet (option)	25m, 50m

## Imaging Station\*

Type	Standard tablet pc (ruggedised options available) * PC specification to be confirmed and agreed at order stage
Operating System	English MS Windows
Power	Mains and battery

## Software Features

Adjustable x-ray source parameters (kV, mA & time)
Standard, Inverted and False Colour images
Rotate, Histogram, Pan, Zoom, DeepFocus™
On-screen Measurement and Annotation (options)
Materials Discrimination and 3D Emboss (options)
Image Stitching (option)
Multi-file format import (option)
Multi-touch functionality for tablet based operation (option)

## Safety

Physical safety interlock plus key switch
Audible & visible warning signs
CE compliant

## Certification & Codes

NATO	Codification NSN 6350-99-170-6036
------	-----------------------------------

[www.3dx-ray.com](http://www.3dx-ray.com)

T. +44 (0) 1509 817400 F. +44 (0) 1509 817401 E. [sales@3dx-ray.com](mailto:sales@3dx-ray.com)

3DX-RAY Ltd, 16 & 18 Hayhill Industrial Estate,  
Barrow upon Soar, Leicestershire, LE12 8LD, UK

An **IMAGE SCAN** company

Registered address: 16 & 18, Hayhill Industrial Estate,  
Barrow upon Soar, Leicestershire, LE12 8LD, UK.  
Registered in England No. 3237543.

